



PROJECT BY



Sree Nidhi Brindhavan  
Kudlu, Sarjapur Road, Bengaluru

**9977560999**  
sreenidhidevelopers999@gmail.com  
www.sreeNidhidevelopers.in

PRM/KA/RERA/1251/308/PR/210226/008481

WHERE LIFE BLOSSOMS LIKE  
**BRINDHAVAN**

PREMIUM 2 & 3 BHK APARTMENTS

A PREMIUM ADDRESS YOU DESERVE

CRAFTED FOR  
**COMFORT.**  
DESIGNED FOR LIFE.

Introducing **Sree Nidhi Brindhavan**, a premium residential enclave by **SRINIDHI BUILDERS**, located in the fast-growing hub of **Kudlu South**. Thoughtfully planned 2 & 3 BHK homes come together with elegant design, modern amenities, and a peaceful environment to create a lifestyle that is truly fulfilling.



# MASTER PLAN



## EVERY SPACE DESIGNED WITH PURPOSE

The master plan of Sree Nidhi Brindhavan reflects a perfect balance of space, structure, and serenity. Every block, pathway, and amenity is thoughtfully positioned to ensure maximum openness, natural light, and seamless movement across the community.

01. ENTRY/EXIT
02. GAZEBO
03. 6'0" WIDE JOGGING TRACK
04. ELDERS ZONE WITH EXERCISEEQUIPMENTS
05. CLIMBING WALL
06. SAND PLAY
07. PLAY EQUIPMENTS
08. HOP SCOTCH
09. MEDITATION LAWN
10. SWIMMING POOL
11. KIDS POOL
12. INDOOR GAMES
13. GYMPE
14. SEATING AREA



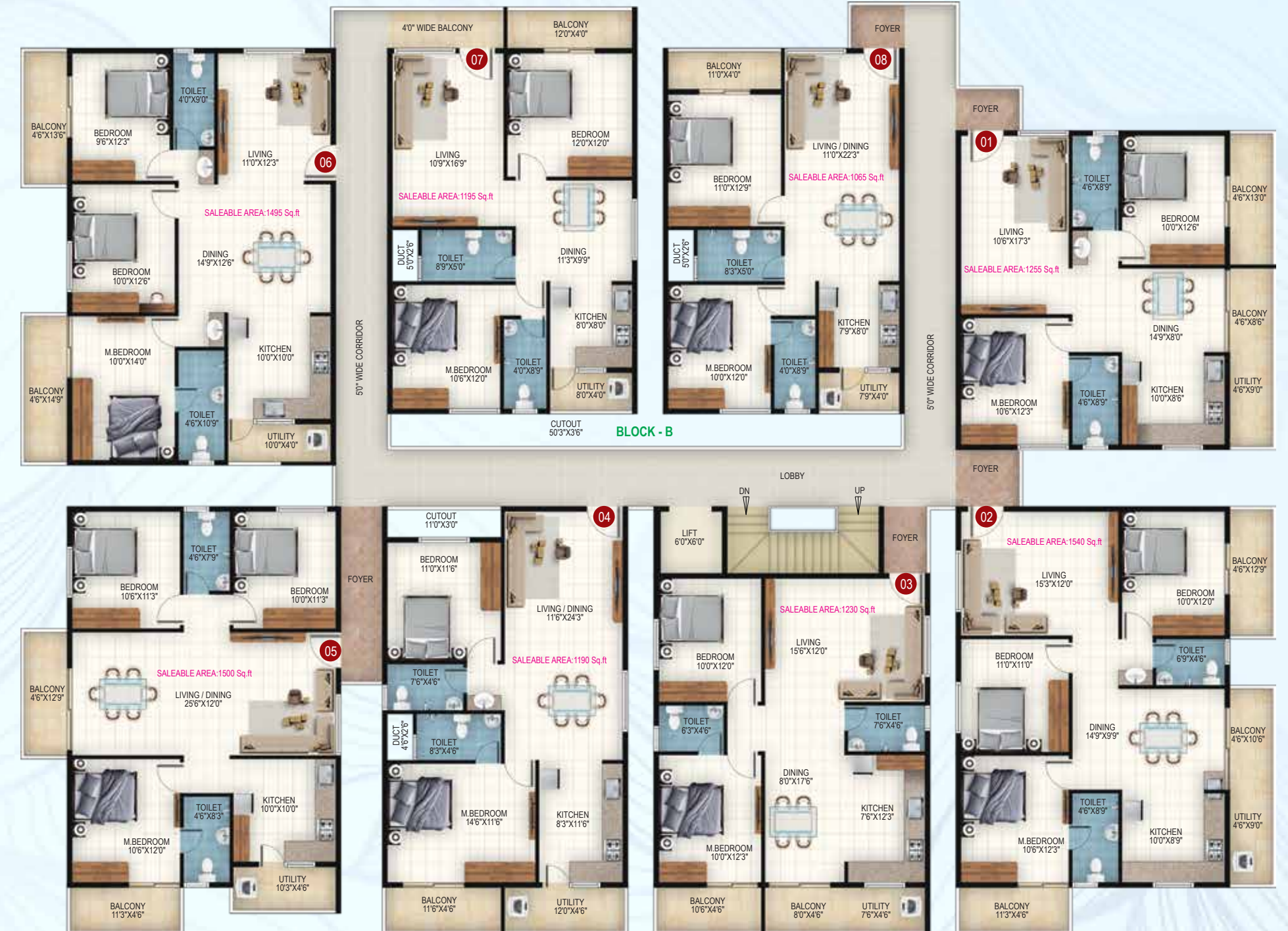
# TYPICAL FLOOR PLAN BLOCK A



SLNO	01	02	03	04	05	06	07	08
TYPE	3 BHK	3 BHK	2 BHK	2 BHK	3 BHK	3 BHK	2 BHK	2 BHK
FACING	North	North	North	North	East	East	North	East
SBA	1530	1595	1090	1130	1500	1375	1105	1175

The well-planned 2 & 3 BHK layouts ensure optimal utilization of every corner, with ample natural light and ventilation enhancing the living experience.

# TYPICAL FLOOR PLAN BLOCK B



SLNO	01	02	03	04	05	06	07	08
TYPE	2 BHK	3 BHK	2 BHK	2 BHK	3 BHK	3 BHK	2 BHK	2 BHK
FACING	North	North	North	North	East	East	North	North
SBA	1255	1540	1230	1190	1500	1495	1195	1065

CRAFTED LAYOUTS FOR  
MODERN FAMILIES



# AMENITIES

THAT ELEVATE  
YOUR LIFESTYLE

Enjoy community living with a fully equipped gym room and a spacious multi-purpose hall for gatherings and celebrations. These shared spaces are designed to foster connections, encourage fitness, and create memorable moments with family and neighbors.

1. CHILDREN'S PLAY AREA
2. GYM
3. STP
4. MULTI-PURPOSE HALL
5. UG SUMP
6. GENERATOR FOR COMMON AREA, BOREWELL, LIFT AND EACH FLAT
7. CCTV
8. INTERCOM FOR EACH FLAT
10. WALKING TRACK
12. SENIOR SIT OUT PLACE
13. SECURITY KIOSK
14. SWIMMING POOL
15. RAIN WATER HARVESTING



A refreshing swimming pool designed for relaxation, leisure, and everyday rejuvenation

EXPERIENCE A LIFESTYLE  
ENRICHED WITH  
THOUGHTFULLY  
DESIGNED AMENITIES  
FOR COMFORT, WELLNESS,  
AND RECREATION.



WHERE QUALITY MEETS  
**PERFECTION**

Every detail at Sree Nidhi Brindhavan reflects a commitment to quality and craftsmanship. From high-grade materials to elegant finishes, each element is carefully selected to enhance durability, aesthetics, and comfort.



**STRUCTURE**  
RCC framed Structure

**ELECTRICAL**  
GM/Anchor/Roma or equivalent  
Provision for AC points in all  
Bed rooms

**WALLS**  
6" Thick Cement solid block for  
exterior walls & 4" thick cement  
solid block for interior walls

**FLOORING**  
Premium quality virtified tiles for  
flooring and anti-skid tiles for  
balcony & utility

**DOORS**  
Main door teak wood frame with  
polished BST doors & Internal doors  
hardwood frame with panel doors  
with enamel paints

**KITCHEN**  
Granite Platform with stainless sink

**WINDOW/SLIDING DOORS**  
Three track & two track UPVC windows  
with safety grills

**TOILETS**  
Ceramic tile flooring & Glaze tiles dado  
Upto 7 feet height

**T.V. & TELEPHONE**  
TV & Telephone point in Living &  
Master Bedroom

**SANITARY**  
Jaguar/Equivalent CP fittings and Jaguar/  
Equivalent sanitary

**LIFT**  
8 passenger automatic lift for kone Make

**CAR PARKING**  
Exclusive covered car parking

**PAINTING**  
Internal walls smoothly plastered with  
primer lime rendering & painted with  
emulsion paint and external walls with  
primer and ACE paint

**WATER SUPPLY**  
Water supply from Borewell

**POWER BACKUP**  
Generator for common area, lifts and  
lighting points up to power backup  
of 1KW for each flat

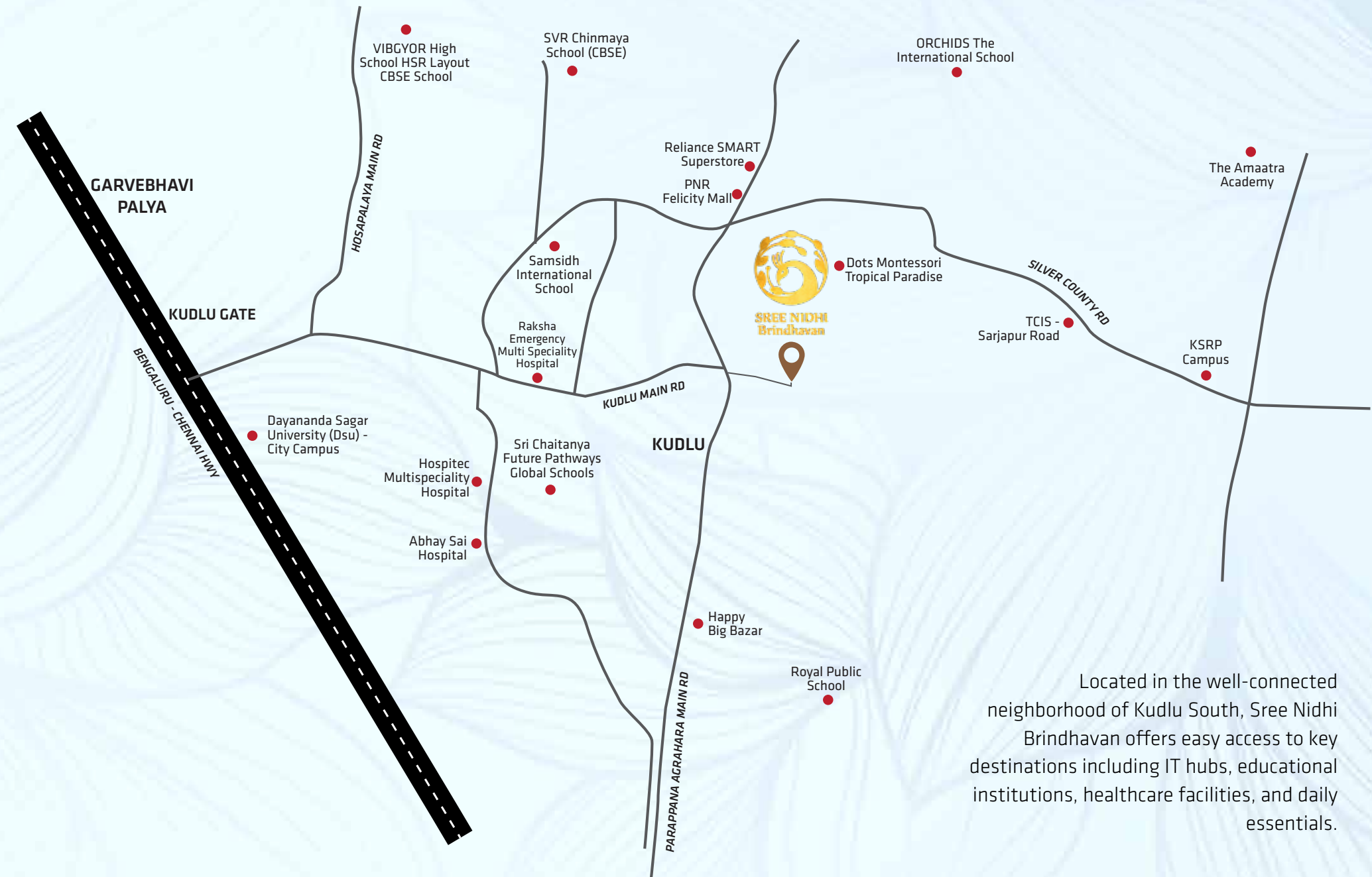
**COMMON AREA**  
Granite for common area

PERFECTLY PLACED  
FOR EVERYDAY

**CONVENIENCE**



SCAN QR CODE FOR  
LOCATION MAP



Located in the well-connected neighborhood of Kudlu South, Sree Nidhi Brindhavan offers easy access to key destinations including IT hubs, educational institutions, healthcare facilities, and daily essentials.